

Establishment and Strength of Disciplined Staff - Correctional Services Department
(1979 - 1988)

Departmental Grade	1979		1980		1981		1982		1983		1984		1985		1986		1987		1988	
	E	S	E	S	E	S	E	S	E	S	E	S	E	S	E	S	E	S	E	S
Commissioner	1	1	1	1	1	1	1	1	1	1	1	1	1	1	1	1	1	1	1	1
Deputy Commissioner	1	1	1	1	2	1	1	1	1	1	1	1	1	1	1	1	1	1	1	1
Assistant Commissioner	1	1	2	2	2	2	2	2	2	2	2	2	2	2	2	3	3	2	3	3
Senior Superintendent	6	5	6	4	8	3	8	7	10	8	11	10	11	11	11	11	11	11	11	11
Superintendent	21	22	21	20	26	17	26	24	31	25	32	28	31	29	31	27	31	27	31	30
Chief Officer	46	46	45	44	54	47	57	48	60	54	66	62	67	61	67	60	67	60	67	61
Principal Officer	147	107	147	130	170	133	182	145	235	148	266	166	166	186	269	217	269	217	269	235
Officer	548	564	548	562	536	523	570	605	654	693	648	696	660	740	655	673	657	657	670	661
Officer (Temporary)	-	-	-	-	-	-	-	-	18	17	26	29	28	33	33	33	31	31	31	31
Assistant Officer I) * 645) * 756) * 756) * 756) * 1013) * 1359) * 1234) * 1373) * 1274) * 1581) * 1465) * 1465) * 1610) * 1436) * 1604) * 1529) * 1613) * 1487) * 1663) * 1500
Assistant Officer II) 2873) 2873) 2873) 2873) 3097) 3097) 3097) 3097) 3097) 3097) 3097) 3097) 3097) 3097) 3097) 3097) 3097) 3097) 3097) 3097
Assistant Officer (Temporary)	-	-	-	-	-	-	-	-	293	303	463	479	461	484	498	511	391	384	391	393
Sub-total :-	3644	3506	3644	3590	3895	3660	4151	3888	5109	4874	5469	5435	5491	5455	5476	5431	5389	5264	5459	5229

Note : E - Establishment S - Strength
 Figures indicate position as at 1 April each year.
 * Combined establishment 1979-1981.

Annex 2.3 - Appendix I(b)

**Establishment and Strength of Disciplined Staff - Correctional Services Department
(1979 - 1988)**

	1979	1980	1981	1982	1983	1984	1985	1986	1987	1988
<u>Correctional Services Industries</u>	E S E S E S E S E S E S E S E S E S	E S E S E S E S E S E S E S E S E S	E S E S E S E S E S E S E S E S E S	E S E S E S E S E S E S E S E S E S	E S E S E S E S E S E S E S E S E S	E S E S E S E S E S E S E S E S E S	E S E S E S E S E S E S E S E S E S	E S E S E S E S E S E S E S E S E S	E S E S E S E S E S E S E S E S E S	E S E S E S E S E S E S E S E S E S
General Manager	1 1									
Superintendent	2 - 2 2 2 1 2 1 2 1 2 1 2 1 2 1 2 1 2 1 2 1 2									
Chief Industrial Officer	3 1 4 3 6 3 6 4 7 6 8 5 8 5 8 7 8 5 8 7 8 8 8									
Principal Industrial Officer	5 2 6 4 15 10 16 12 18 10 19 10 20 14 20 16 20 14 20 14 20 12									
Industrial Officer	8 - 8 5 16 9 21 13 21 17 21 19 24 24 24 24 23 24 24 23 24 27 24 28									
Instructor	103 79 103 77 132 82 127 77 102 91 118 108 133 119 136 130 136 127 140 126									
Sub-total :-	122 83 124 92 172 106 173 108 151 125 169 143 188 163 191 178 191 178 191 178 195 177									
*Grand Total :	3766 3589 3768 3682 4067 3766 4324 3996 5260 4999 5638 5578 5679 5618 5667 5609 5580 5442 5654 5406									

Note : E - Establishment S - Strength
 Figures indicate position as at 1 April each year.
 * Total of Appendix I(a) and I(b)

DISCIPLINED STAFF WASTAGE (1979 - 1987)
CORRECTIONAL SERVICES

Rank Year	Sr.	A.O.I							Total	Reasons of Leaving				Disciplined Staff Strength
		Supt.	Supt.	C.O.	P.O.	Officer	A.O.I	A.O. II		Resign	Transfer	Retire	Others	
1979	-	2	1	2	2	69	16	404	494 (a) (13.76%)	398	-*	35	61	3,589
1980	1	1	2	7	58	31	383	483 (a) (13.12%)	346	-*	34	103	3,682	
1981	1	1	1	4	54	33	339	433 (a) (11.50%)	339	-*	36	58	3,766	
1982	-	-	-	2	37	23	256	318 (a) (7.96%)	267	-*	26	25	3,996	
1983	-	1	3	2	69	20	515	610 (a) (12.20%)	401	54	15	140	4,999	
1984	1	-	1	7	79	26	303	417 (a) (7.48%)	302	55	22	38	5,578	
1985	-	1	1	2	76	15	212	307 (a) (5.46%)	214	44	12	37	5,618	
1986	-	-	1	2	50	37	116	206 (a) (3.67%)	113	46	25	22	5,609	
1987	-	2	1	2	42	32	183	262 (a) (4.81%)	152	64	39	7	5,442	
Total	3	8	11	30	534	233	2,711	3,530	2,532 (b) (71.73%)	263 (b) (7.45%)	244 (b) (6.91%)	491 (b) (13.91%)		

Figures in () (a) represent the wastage % of the disciplined staff strength in the department.
 Figures in () (b) represent the wastage % of the total wastage figure.
 * Figures not available for 1979-1982.

Legend

Sr.Supt. : Senior Superintendent
Supt. : Superintendent
C.O. : Chief Officer
P.O. : Principal Officer
A.O.I : Assistant Officer I
A.O.II : Assistant Officer II

ACTUAL EXPENDITURE (\$M) FOR 1979-1989
CORRECTIONAL SERVICES DEPARTMENT

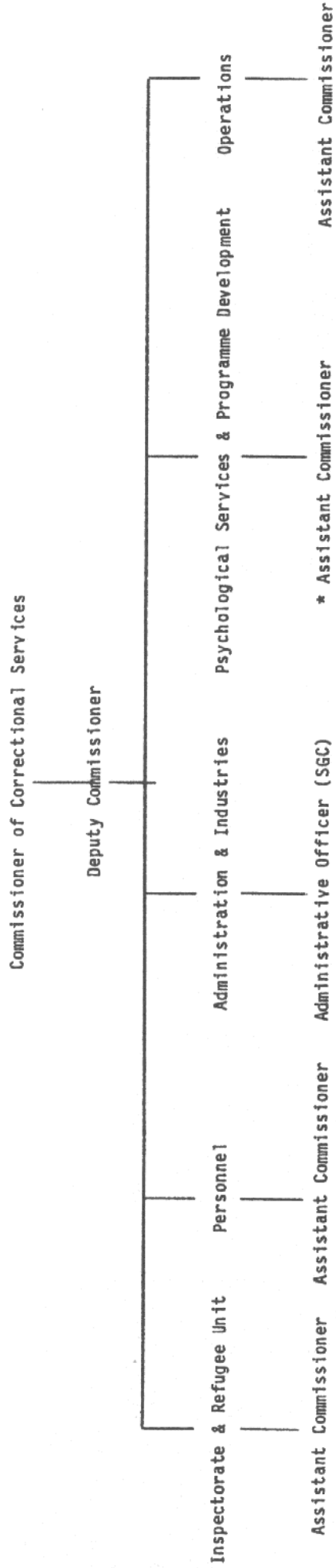
	<u>79/80</u>	<u>80/81</u>	<u>81/82</u>	<u>82/83</u>	<u>83/84</u>	<u>84/85</u>	<u>85/86</u>	<u>86/87</u>	<u>87/88*²</u>	<u>88/89*³</u>
Overall HKG										
Budget	<u>12,982</u>	<u>23,593</u>	<u>27,778</u>	<u>34,598</u>	<u>33,393</u>	<u>36,902</u>	<u>39,798</u>	<u>39,928</u>	<u>44,474</u>	<u>49,976</u>
Personal Emoluments	125	161	201	266	326	388	437	488	525	536
Other Charges* ¹	29	38	53	57	73	79	79	82	91	107
Total	154	199	254	323	399	467	516	570	616	643

*1 Other charges include other recurrent expenditures and Capital Accounts.

*2 Revised estimate for 87/88.

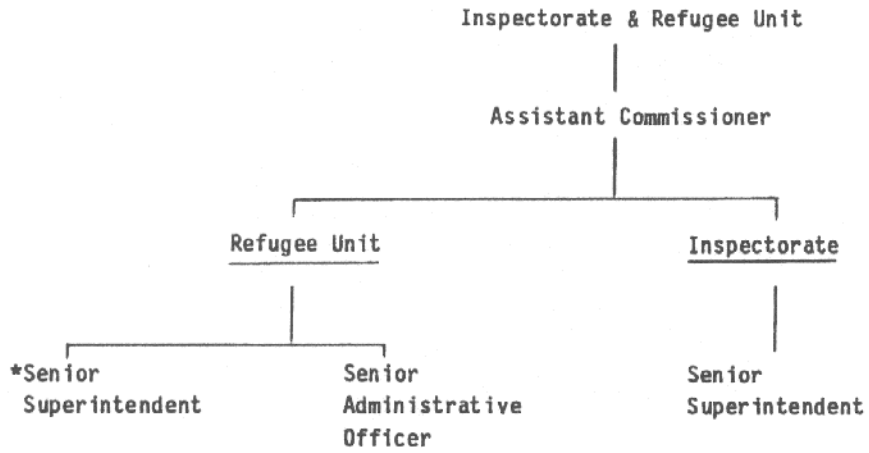
*3 Estimate for 1988/89.

ORGANIZATION CHART OF CORRECTIONAL SERVICES DEPARTMENT



* Assistant Commissioner (Psychological Services & Programme Development) approved under a Capital Account Item.

ORGANIZATION OF INSPECTORATE & REFUGEE UNIT



Hei Ling Chau
Detention Centre

Chimawan Closed
Centre

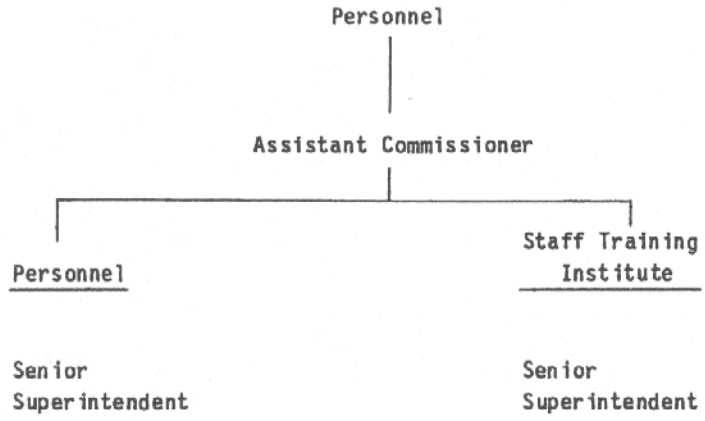
Tuen Mun
Closed Centre

Sham Shui Po
Closed Centre

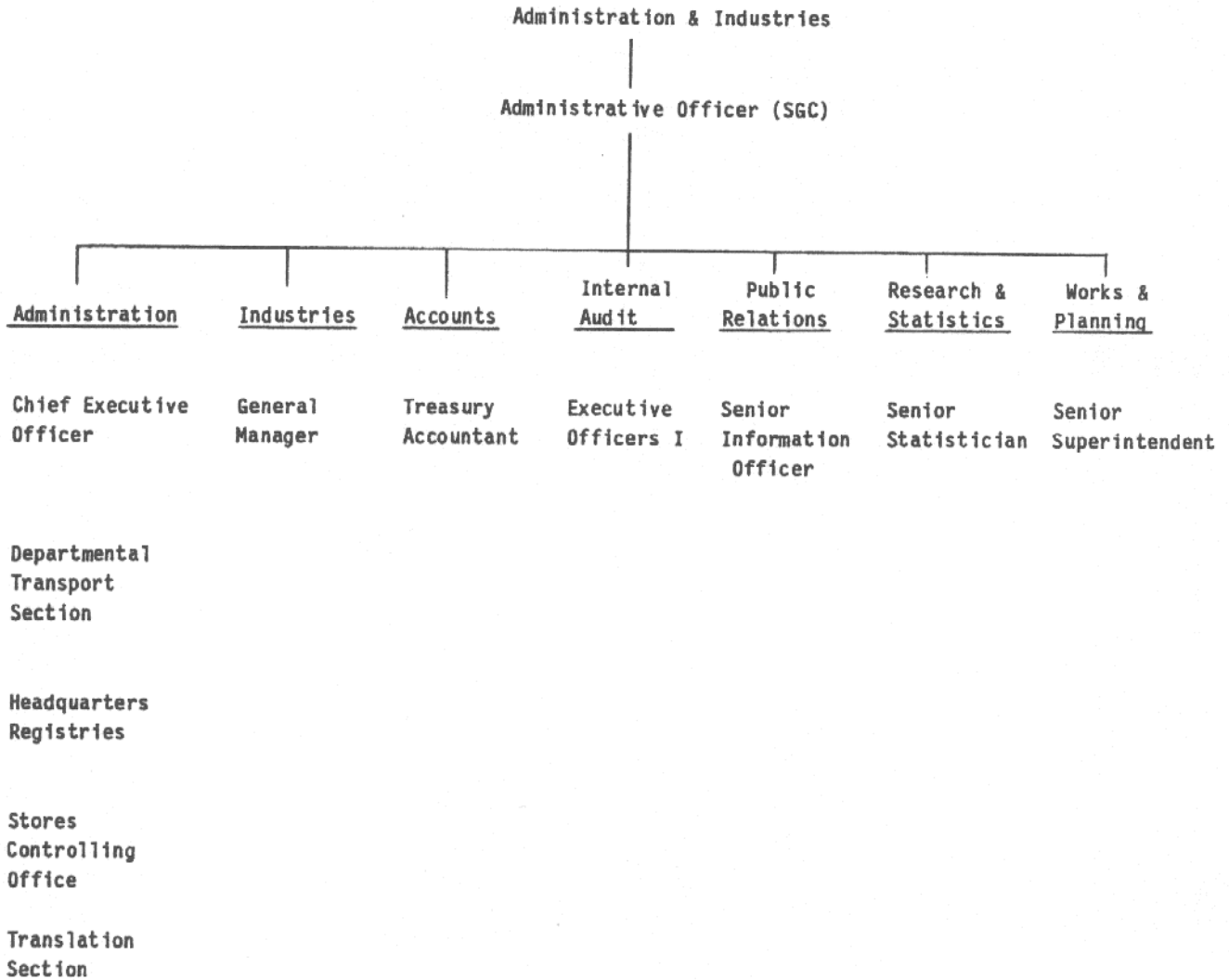
Cape Collinson
Correctional
Institution
(Refugee Unit)

* Also head of Treatment Centres

ORGANIZATION OF PERSONNEL



ORGANIZATION OF ADMINISTRATION & INDUSTRIES



ORGANIZATION OF PSYCHOLOGICAL SERVICES & PROGRAMME DEVELOPMENT

Psychological Services & Programme Development



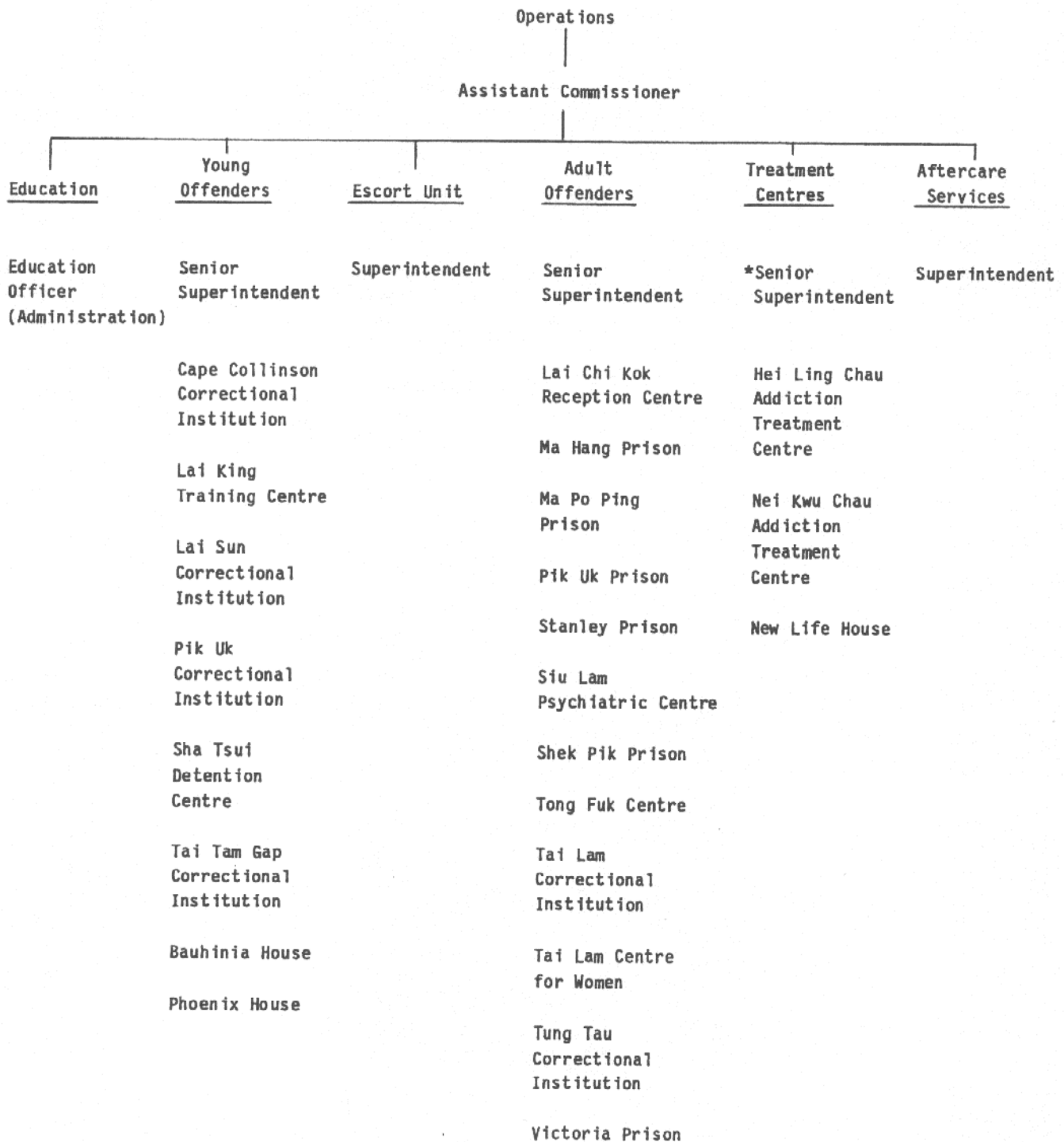
Assistant Commissioner



Psychological
Services

Senior Clinical
Psychologist

ORGANIZATION OF OPERATIONS



* Also head of Refugee Unit

Annex 2.3 - Appendix V

**Strength of Major Divisions - Correctional Services Department
(as at 1.7.88)**

<u>Division</u>	<u>Disciplined Services</u>	<u>Civilian Staff</u>	<u>Total</u>
Inspectorate & Refugee Unit	581	38	619
Personnel	215	52	267
Administration & Industries	123	148	271
Psychological Services & Programme Development	13	6	19
Operations	4380	489	4869
	<hr/>	<hr/>	<hr/>
	5312	733	6045