

Establishment and Strength of Disciplined Staff - Fire Services Department
(1979 - 1988)

Rank	1979		1980		1981		1982		1983		1984		1985		1986		1987		1988	
	E	S	E	S	E	S	E	S	E	S	E	S	E	S	E	S	E	S	E	S
I. Fire Personnel																				
A. Officer																				
D	1	1	1	1	1	1	1	1	1	1	1	1	1	1	1	1	1	1	1	1
DD	1	1	1	1	1	1	1	1	1	1	1	1	1	1	1	1	1	1	1	1
CFD	4	4	5	5	6	6	5	5	6	6	5	5	6	6	6	6	7	7	6	5
DCFD	-	-	4	4	4	3	6	6	5	5	5	5	6	5	5	5	6	6	5	6
ACFD*/SDO	6	6	12	10	13	11	16	16	20	19	20	19	21	22	21	21	22	21	23	22
DO	29	26	24	27	24	27	24	23	24	25	25	25	27	27	25	25	26	27	27	28
ADO	57	51	57	58	60	53	66	68	65	59	65	64	69	68	73	70	77	72	84	80
ASO*/SO/ SSO	381	277	384	298	369	323	386	332	394	383	437	427	439	430	443	434	447	432	464	453
Sub-total	479	366	488	40	478	425	505	452	516	499	559	547	570	558	575	563	587	567	611	596
B. Rank & File																				
PFn	222	194	222	211	272	260	287	272	294	266	291	269	310	286	315	281	351	324	380	346
SFn	611	569	614	571	617	591	636	590	778	702	767	699	787	661	794	737	822	764	853	740
Fn	2443	2079	2461	2249	2599	2309	2739	2438	2441	2499	2441	2463	2602	2736	2652	2708	2860	2914	3027	3109
Sub-total	3276	2842	3297	3031	3488	3150	3662	3300	3513	3467	3499	3431	3699	3683	3761	3726	4033	4002	4260	4195

Note : E - Establishment
S - Strength
Figures indicate position as at 1 April each year.
* Old ranks (abolished after 1979)

Annex 2.2 - Appendix I(b)

Establishment and Strength of Disciplined Staff - Fire Services Department
(1979 - 1988)

Rank	1979		1980		1981		1982		1983		1984		1985		1986		1987		1988	
	E	S	E	S	E	S	E	S	E	S	E	S	E	S	E	S	E	S	E	S
CAO	1	1	1	1	1	1	1	1	1	1	1	1	1	1	1	1	2	2	1	1
ACAO	1	1	1	1	1	1	1	1	1	1	2	1	2	1	2	2	2	2	2	2
Supt	2	2	2	4	4	4	5	4	4	4	5	5	4	4	5	5	5	4	6	5
SA0	4	4	4	4	7	6	7	7	6	7	7	5	7	6	7	6	10	10	13	9
A0	14	14	17	17	19	12	19	16	21	17	24	18	25	24	45	38	50	48	56	57
Sub-total	22	22	25	24	32	24	32	27	34	29	39	30	39	36	60	52	69	66	78	74

B. Rank & File

PAmbm	80	78	94	73	107	101	120	108	128	106	128	120	145	119	150	131	160	148	171	149
SAmbm	213	201	236	231	292	239	326	278	416	280	436	398	421	397	445	377	478	443	478	463
Ambm	565	541	640	594	750	770	844	870	1003	1084	1047	1095	1070	1083	1093	1180	1130	1157	1159	1135
Sub-total	858	820	970	898	1149	1110	1290	1256	1547	1470	1611	1613	1636	1599	1688	1688	1768	1748	1808	1747
Total: Officer	501	388	513	428	510	449	537	479	550	528	598	577	609	594	635	615	656	633	689	670
Men	4134	3662	4267	3929	4637	4260	4952	4556	5060	4937	5110	5044	5335	5282	5449	5414	5801	5750	6068	5942
*Grand Total	4635	4050	4780	4357	5147	4709	5489	5035	5610	5465	5708	5621	5944	5876	6084	6029	6457	6383	6757	6612

Note : E - Establishment S - Strength
 Figures indicate position as at 1 April each year.
 * Total of Appendix I(a) and I(b)

Annex 2.2 - Appendix I(c)

Legend

D -	Director	PFn -	Principal Fireman	PAmbm -	Principal Ambulanceman
DD -	Deputy Director	SFn -	Senior Fireman	SAmbm -	Senior Ambulanceman
CF0 -	Chief Fire Officer	Fn -	Fireman	Ambm -	Ambulanceman
DCFO -	Deputy Chief Fire Officer	CA0 -	Chief Ambulance Officer		
ACFO -	Assistant Chief Fire Officer	ACA0 -	Assistant Chief Ambulance Officer		
SD0 -	Senior Divisional Officer	Supt -	Superintendent		
D0 -	Divisional Officer	SA0 -	Senior Ambulance Officer		
ADD -	Assistant Divisional Officer	A0 -	Ambulance Officer		
AS0 -	Assistant Station Officer				
SO -	Station Officer				
SS0 -	Senior Station Officer				

DISCIPLINED STAFF WASTAGE (1979 - 1987)
FIRE SERVICES

Rank Year	SSO/ SO/											Reasons of Leaving			Disciplined Staff Strength										
	D	DD	CF0	DCFO	SDO	DO	ADO	ASO	PFn.	SFn.	Fn.	CA0	Supt.	SA0		A0	PAmbm	S	Ambm	Ambm	Total	Resign	Transfer	Retire	Others
1979	-	-	-	1	1	1	1	9	16	29	166	1	-	-	-	-	-	15	27	266 ^a (6.57%)	158	19	32	57	4,050
1980	-	-	1	-	1	2	1	15	14	29	86	-	1	-	-	3	3	32	188 ^a (4.31%)	87	19	34	48	4,357	
1981	-	1	1	-	1	-	1	15	20	26	73	-	1	-	-	1	6	38	184 ^a (3.91%)	80	26	31	47	4,709	
1982	-	-	-	1	2	-	2	12	20	20	84	-	1	-	-	1	2	18	163 ^a (3.24%)	65	28	30	40	5,035	
1983	-	-	2	-	-	-	-	8	18	22	38	-	-	-	-	6	5	14	113 ^a (2.07%)	34	22	21	36	5,465	
1984	-	-	-	-	-	-	1	12	15	16	67	-	1	-	-	1	2	7	122 ^a (2.17%)	56	12	13	41	5,621	
1985	1	-	1	1	1	2	3	2	18	28	57	-	-	-	3	5	3	15	140 ^a (2.38%)	34	21	25	60	5,876	
1986	-	-	1	-	1	3	2	11	19	22	59	-	2	-	1	4	4	24	153 ^a (2.54%)	42	29	22	60	6,029	
1987	1	-	2	1	2	1	3	18	31	26	74	1	-	1	-	7	2	30	200 ^a (3.13%)	68	28	33	71	6,383	
Total	2	1	8	4	8	9	14	102	171	218	704	2	6	1	4	28	42	205	1,529	624	204	241	460		
																				(40.81%) ^b	(13.34%) ^b	(15.76%) ^b	(30.09%) ^b		

Figures in ()^a represent the wastage % of the disciplined staff strength in the department.
 Figures in ()^b represent the wastage % of the total wastage figure.
 Please refer to Legend in Appendix I.

Annex 2.2 - Appendix III

**ACTUAL EXPENDITURE (\$M) FOR 1979-1989
FIRE SERVICES DEPARTMENT**

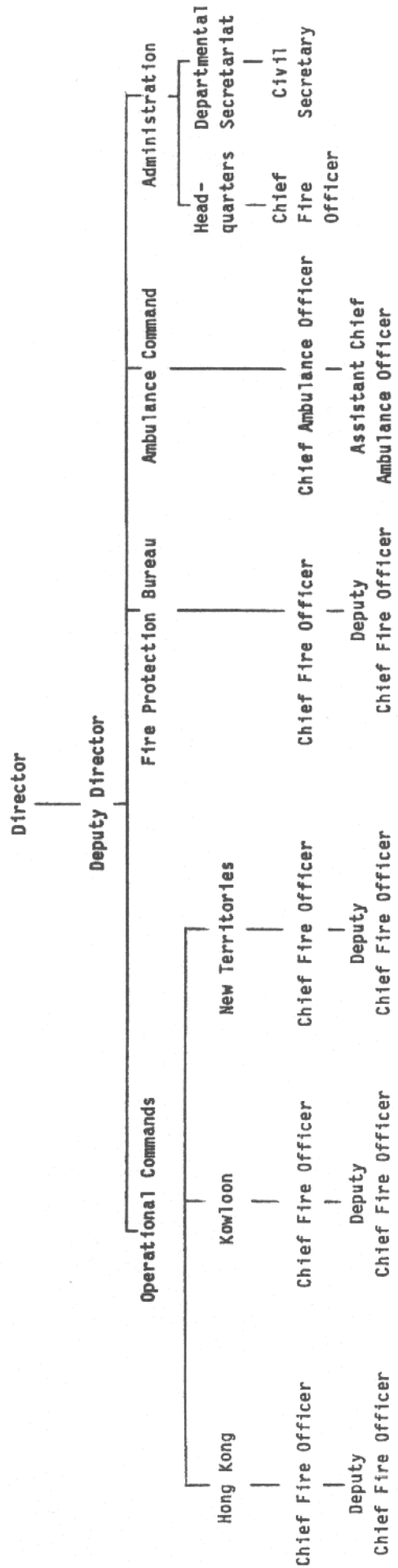
	<u>79/80</u>	<u>80/81</u>	<u>81/82</u>	<u>82/83</u>	<u>83/84</u>	<u>84/85</u>	<u>85/86</u>	<u>86/87</u>	<u>87/88*²</u>	<u>88/89*³</u>
<u>Overall HKG</u>										
<u>Budget</u>	<u>12,982</u>	<u>23,593</u>	<u>27,778</u>	<u>34,598</u>	<u>33,393</u>	<u>36,902</u>	<u>39,798</u>	<u>39,928</u>	<u>44,474</u>	<u>49,976</u>
Personal Emoluments	139	187	236	295	331	377	430	499	555	585
Other Charges* ¹	34	43	48	55	54	49	59	63	62	116
Total	173	230	284	350	385	426	489	562	617	701

*1 Other charges include other recurrent expenditures and Capital Accounts.

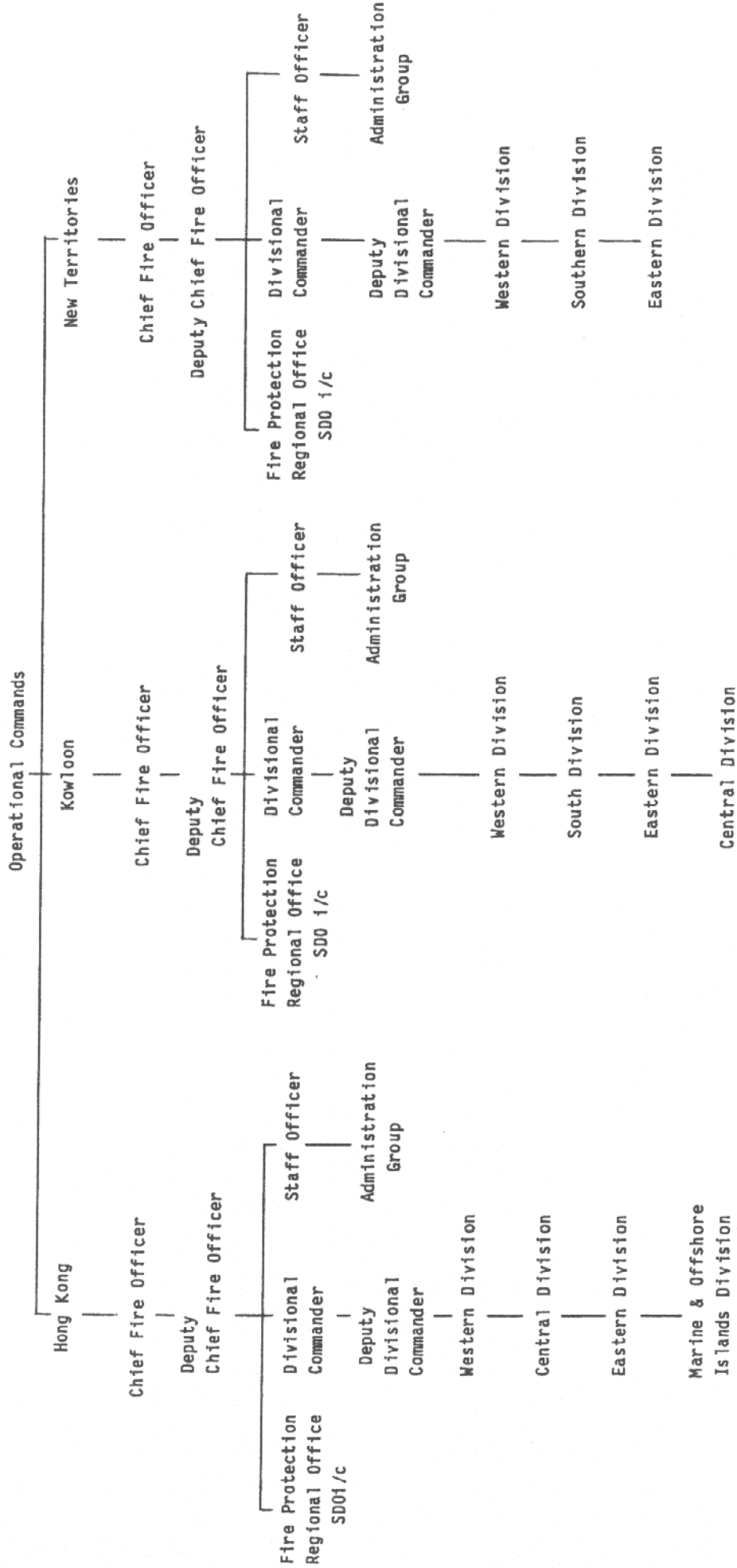
*2 Revised estimate for 87/88.

*3 Estimate for 1988/89.

ORGANIZATION CHART OF FIRE SERVICES DEPARTMENT

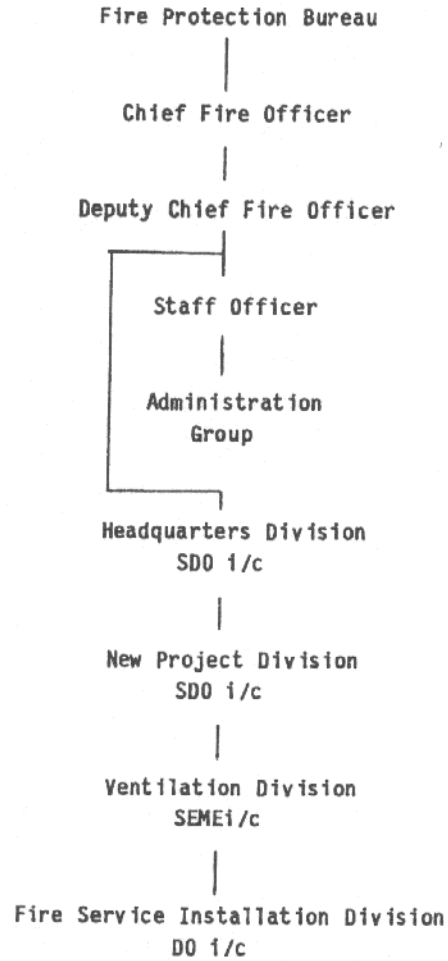


ORGANIZATION OF OPERATIONAL COMMANDS



Legend
SDO - Senior Divisional Officer

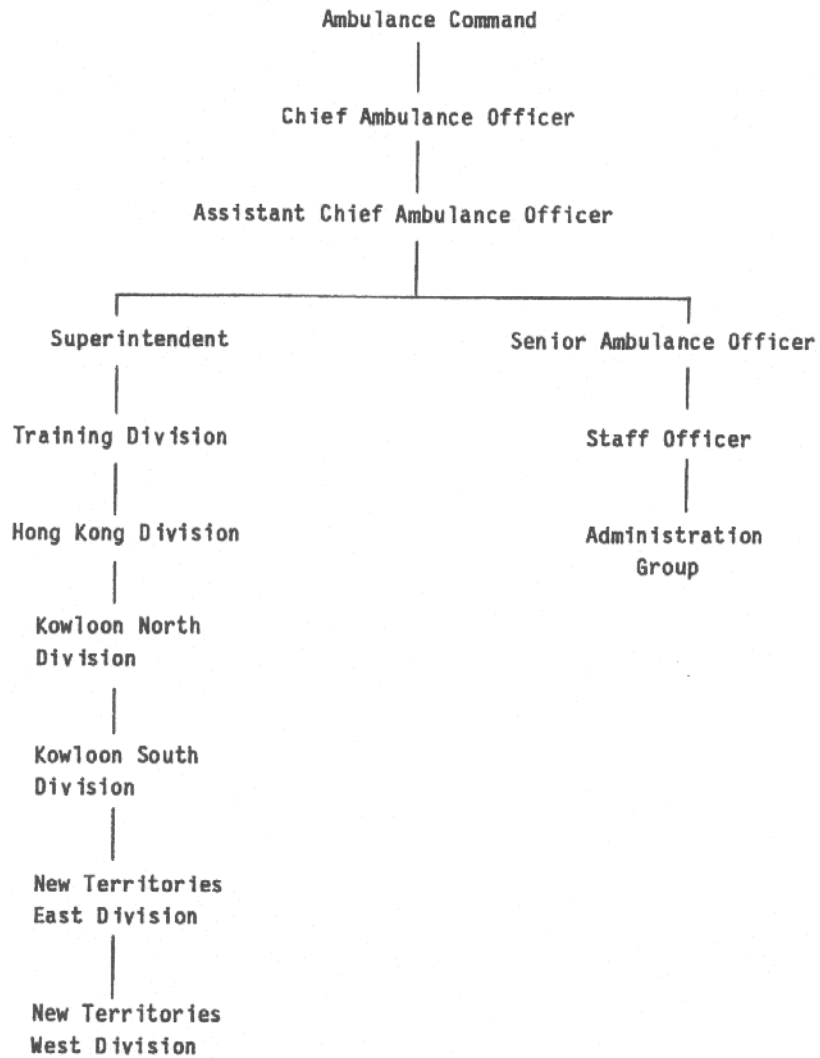
ORGANIZATION OF FIRE PROTECTION BUREAU



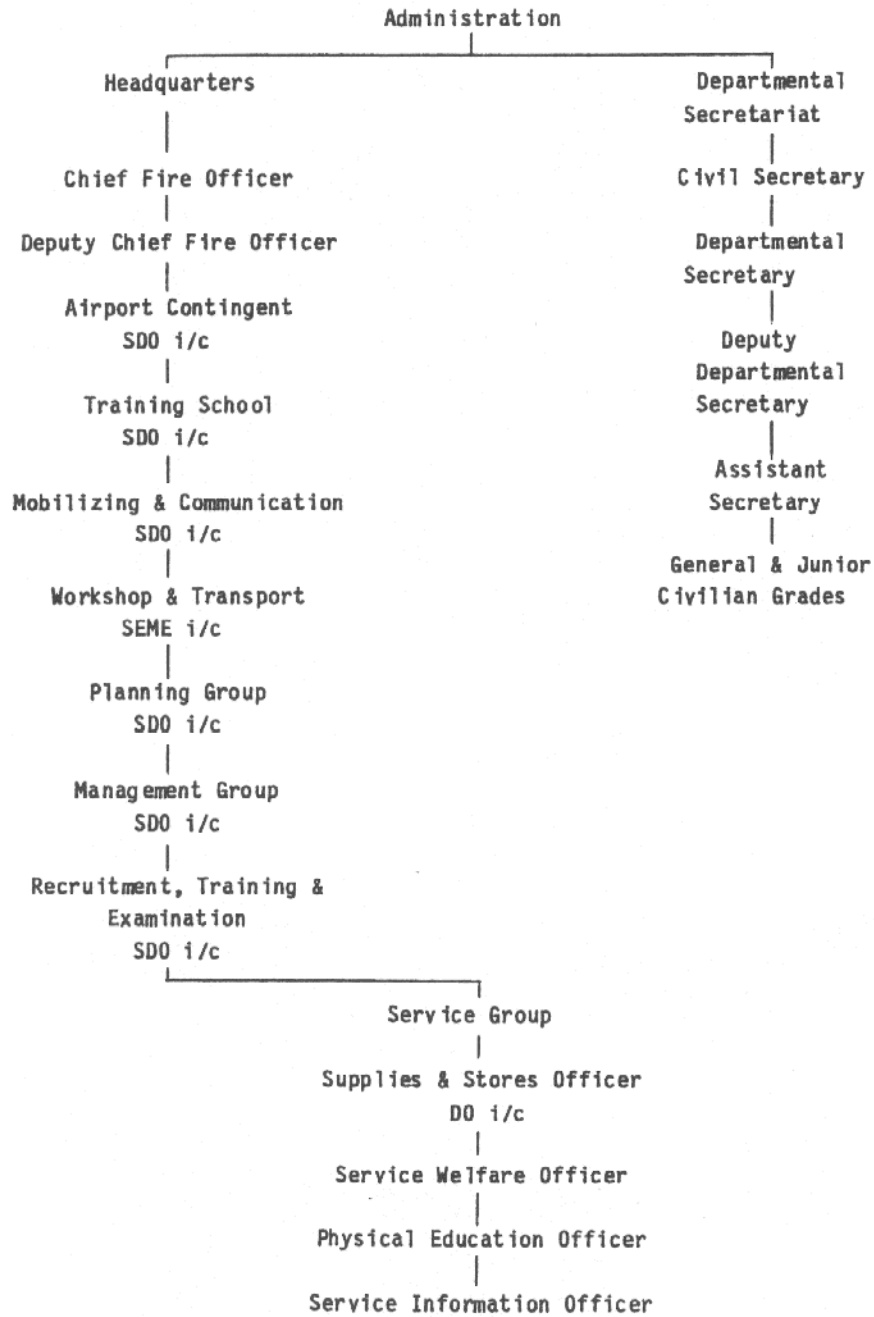
Legend

- SDO - Senior Divisional Officer
- DO - Divisional Officer
- SEME - Senior Electrical Mechanical Engineer

ORGANIZATION OF AMBULANCE COMMAND



ORGANIZATION OF ADMINISTRATION



Legend

SDO - Senior Divisional Officer

DO - Divisional Officer

SEME - Senior Electrical & Mechanical Engineer

Annex 2.2 - Appendix V

**STRENGTH OF MAJOR COMMANDS - FIRE SERVICES DEPARTMENT
(as at 1.7.88)**

<u>Command</u>	<u>Disciplined Services</u>	<u>Civilian Staff</u>	<u>Total</u>
Kowloon Fire Command	936	83	1019
Hong Kong Fire Command	1442	74	1516
New Territories Fire Command	1186	60	1246
Fire Protection Bureau	85	59	144
Ambulance Command	1892	151	2043
Headquarters Command	1131	236	1367
	<hr/>	<hr/>	<hr/>
Total :	6672	663	7335