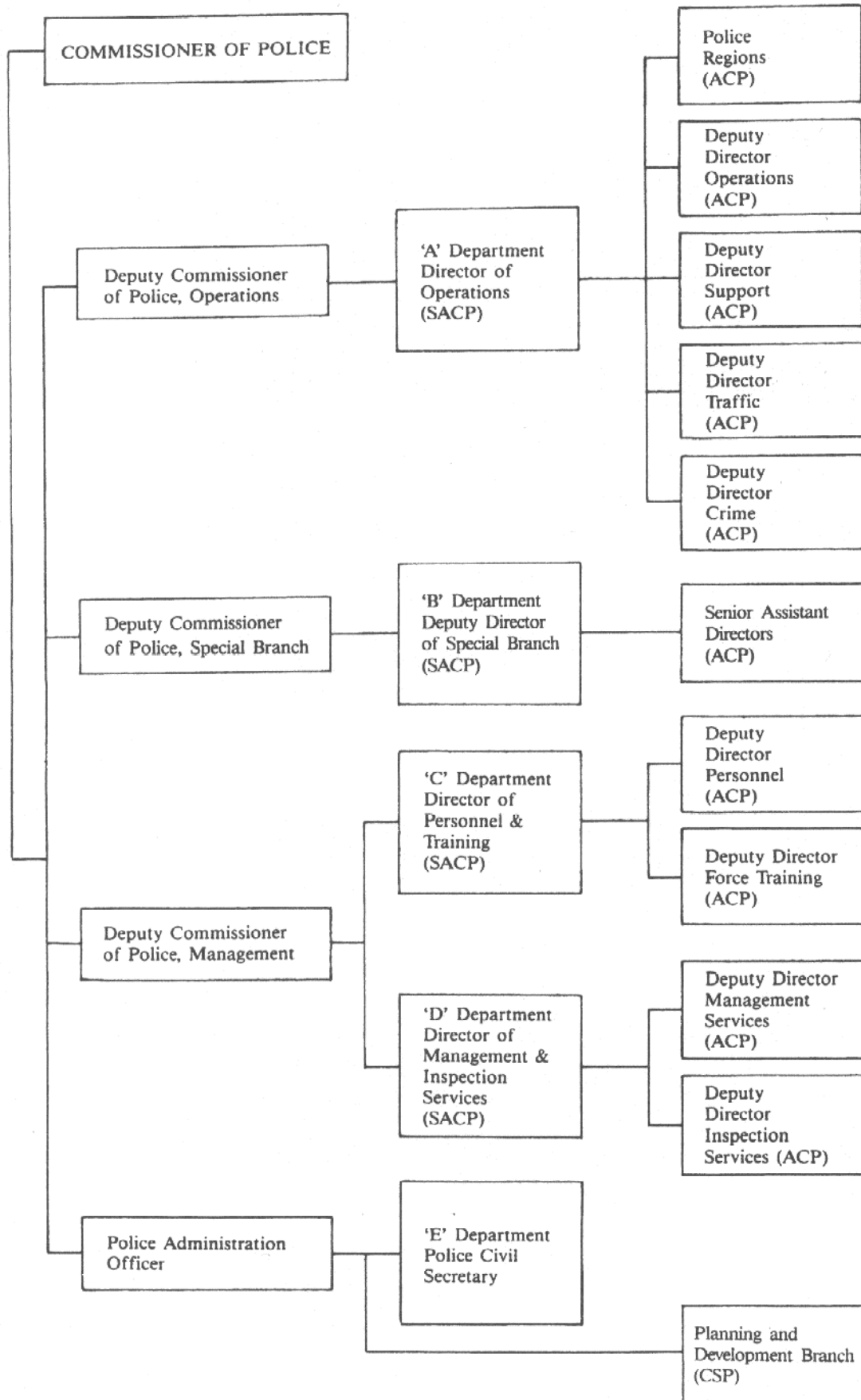
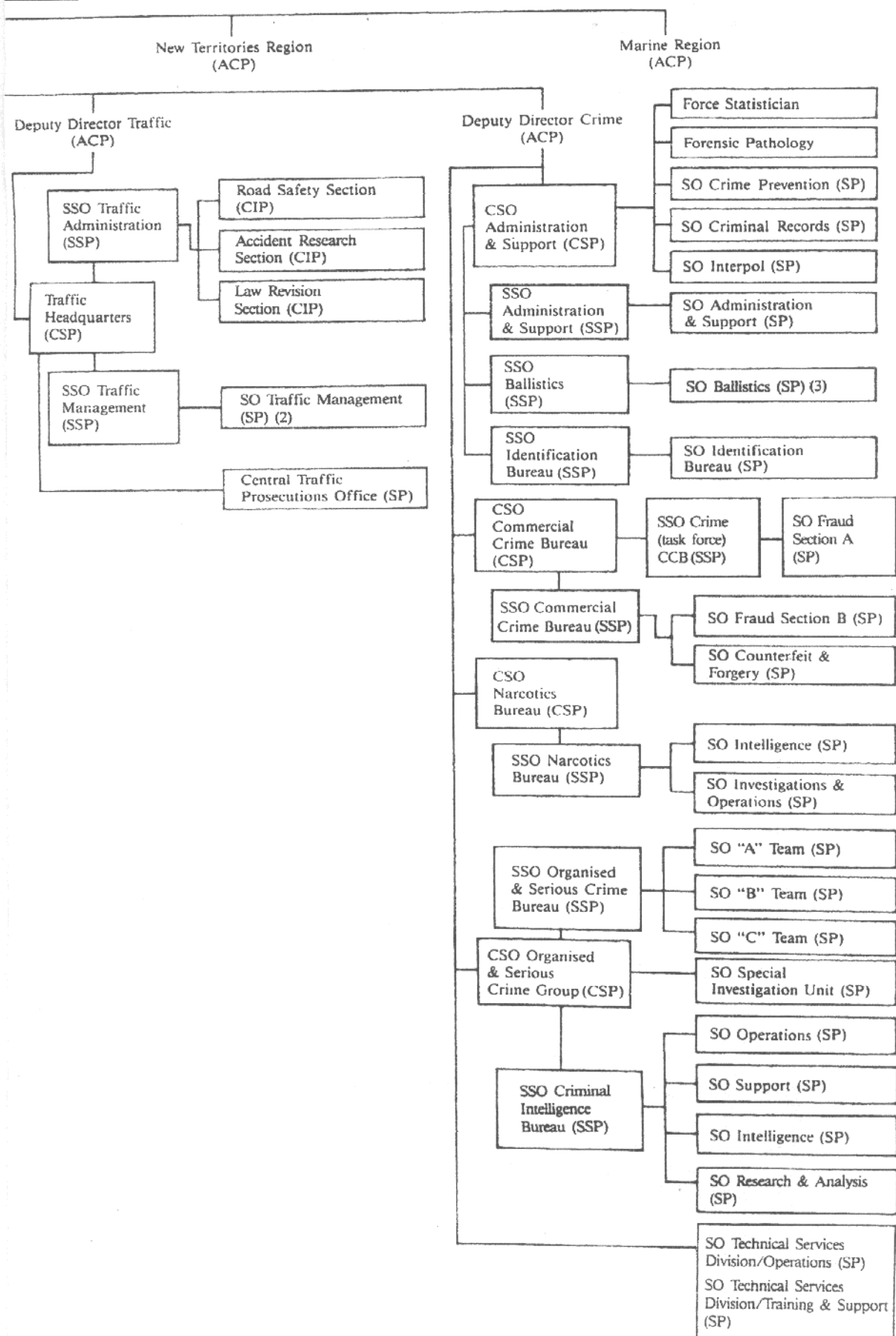


ORGANISATION OF FORCE HEADQUARTERS DIRECTORATE

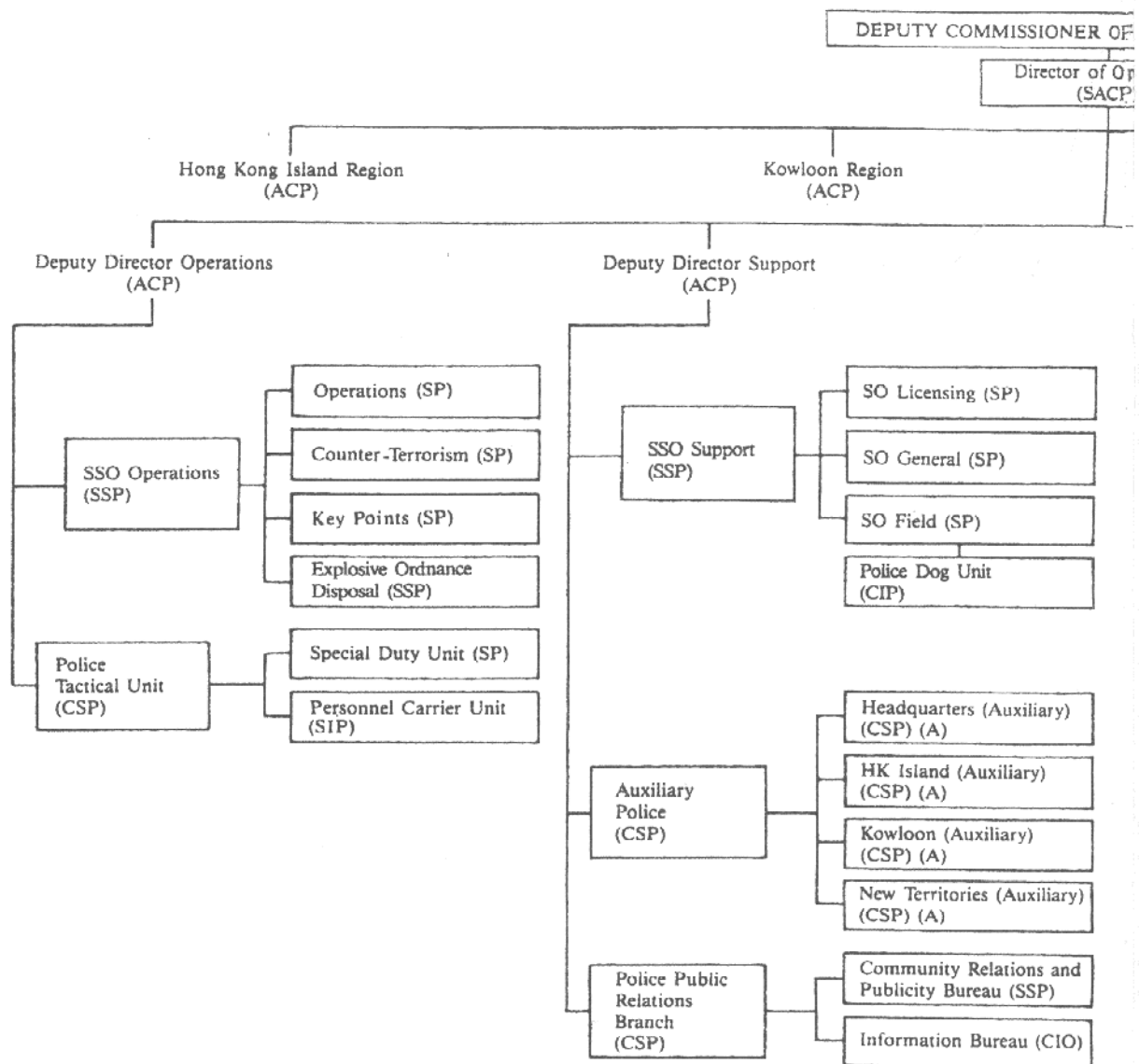


DEPARTMENT (OPERATIONS)

POLICE (OPERATIONS)
 erations

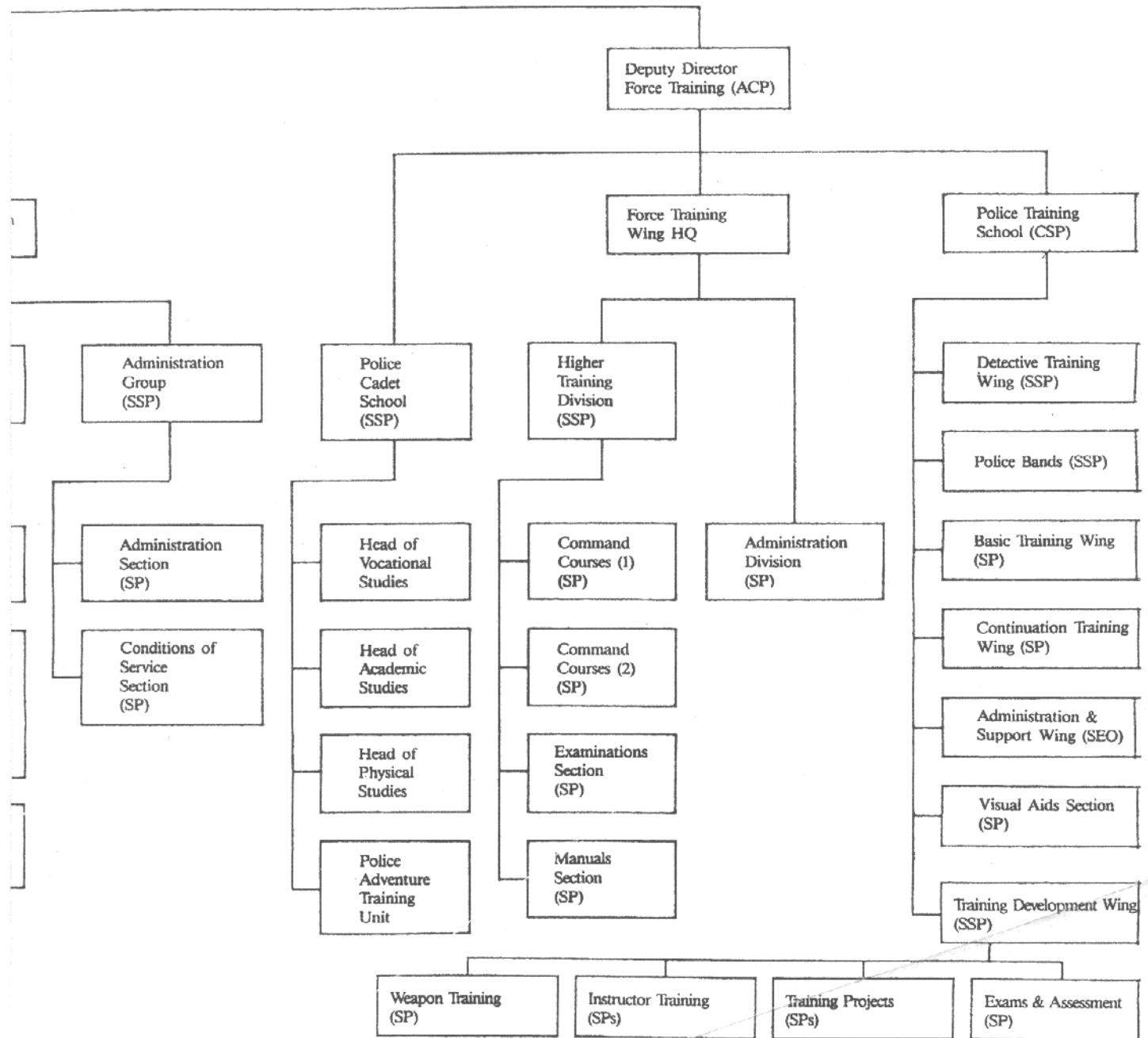


ORGANISATION OF "A" DEPT

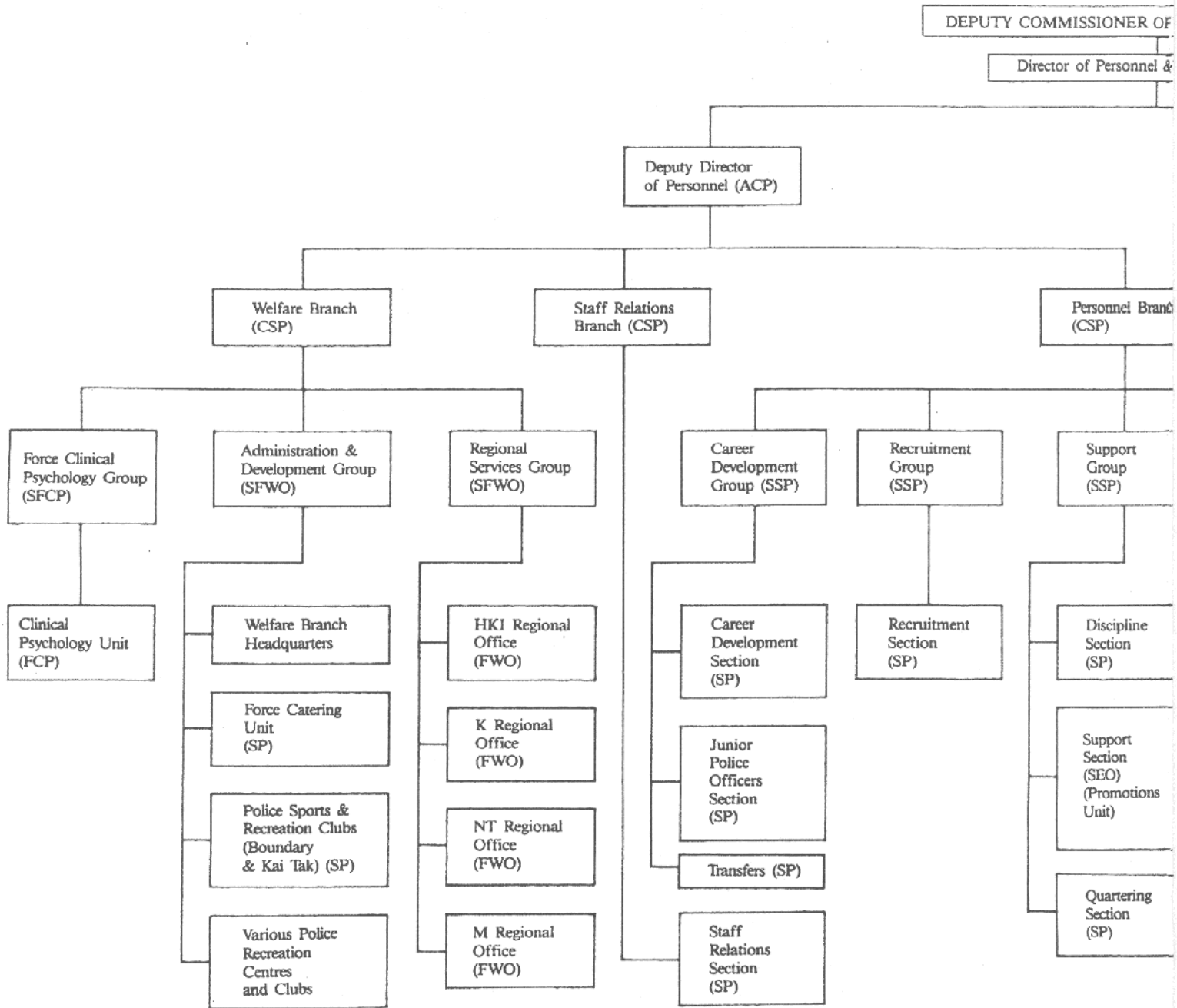


"C" DEPARTMENT
D TRAINING)

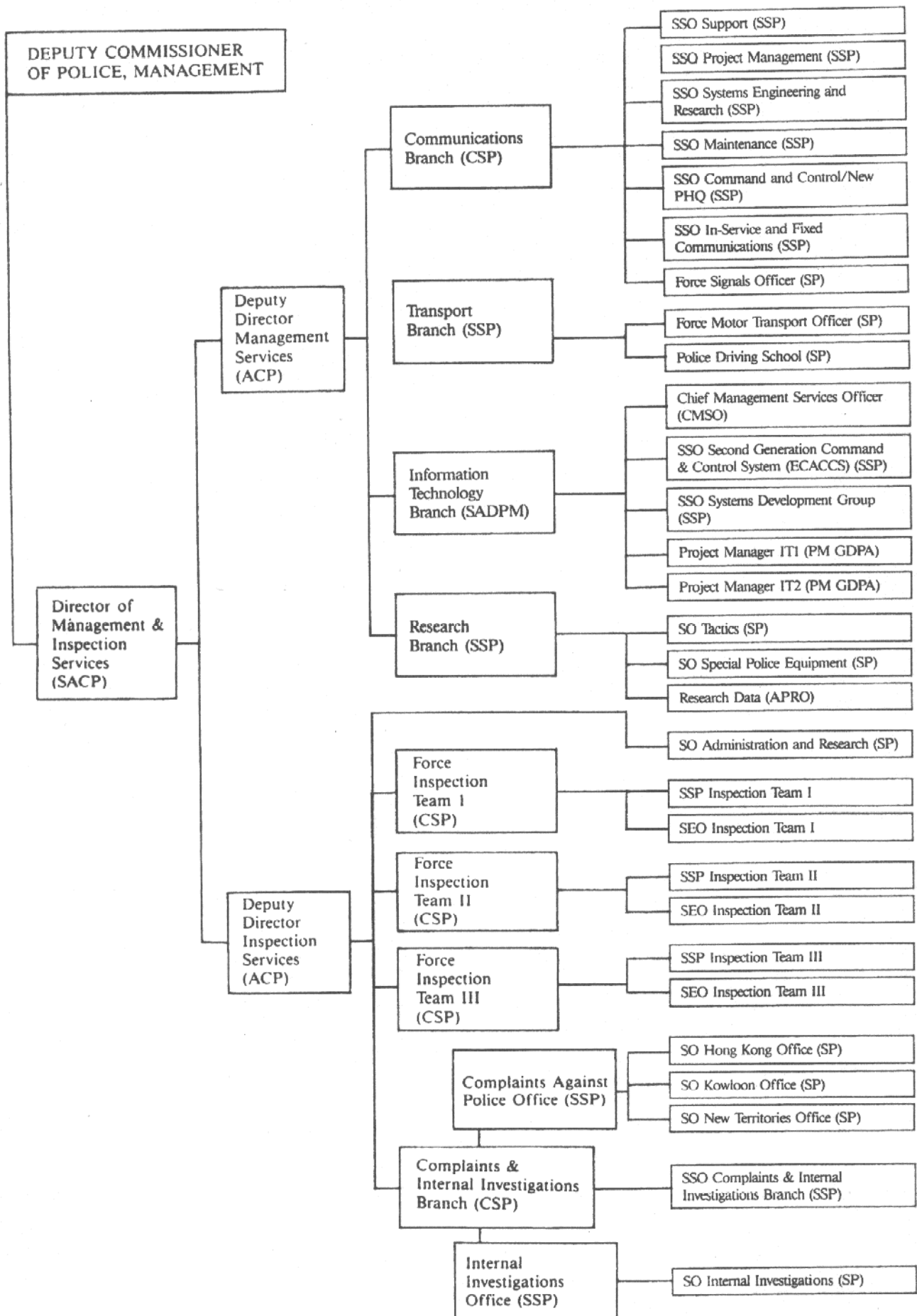
POLICE, MANAGEMENT
Training (SACP)



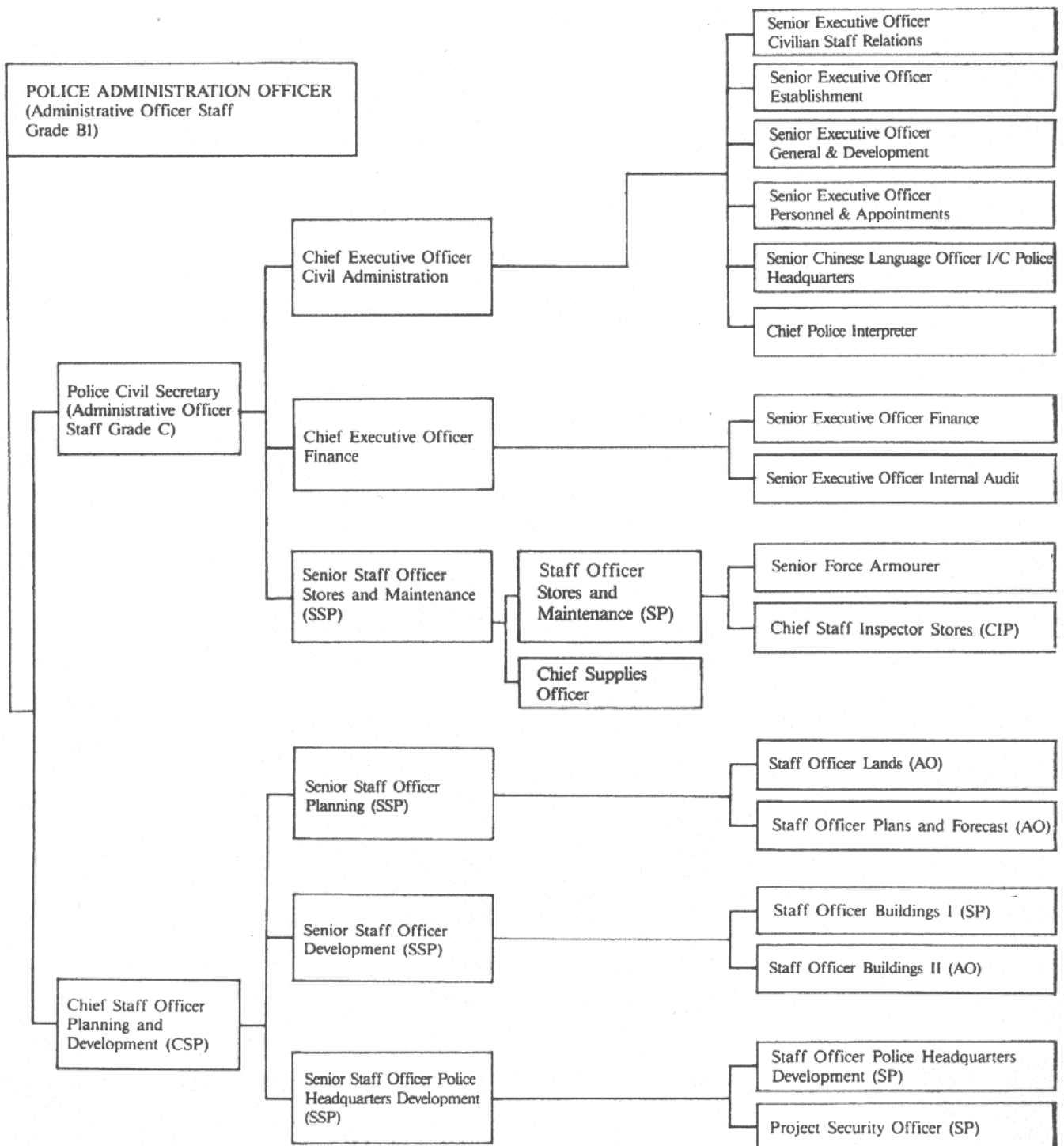
ORGANISATION OF (PERSONNEL AND



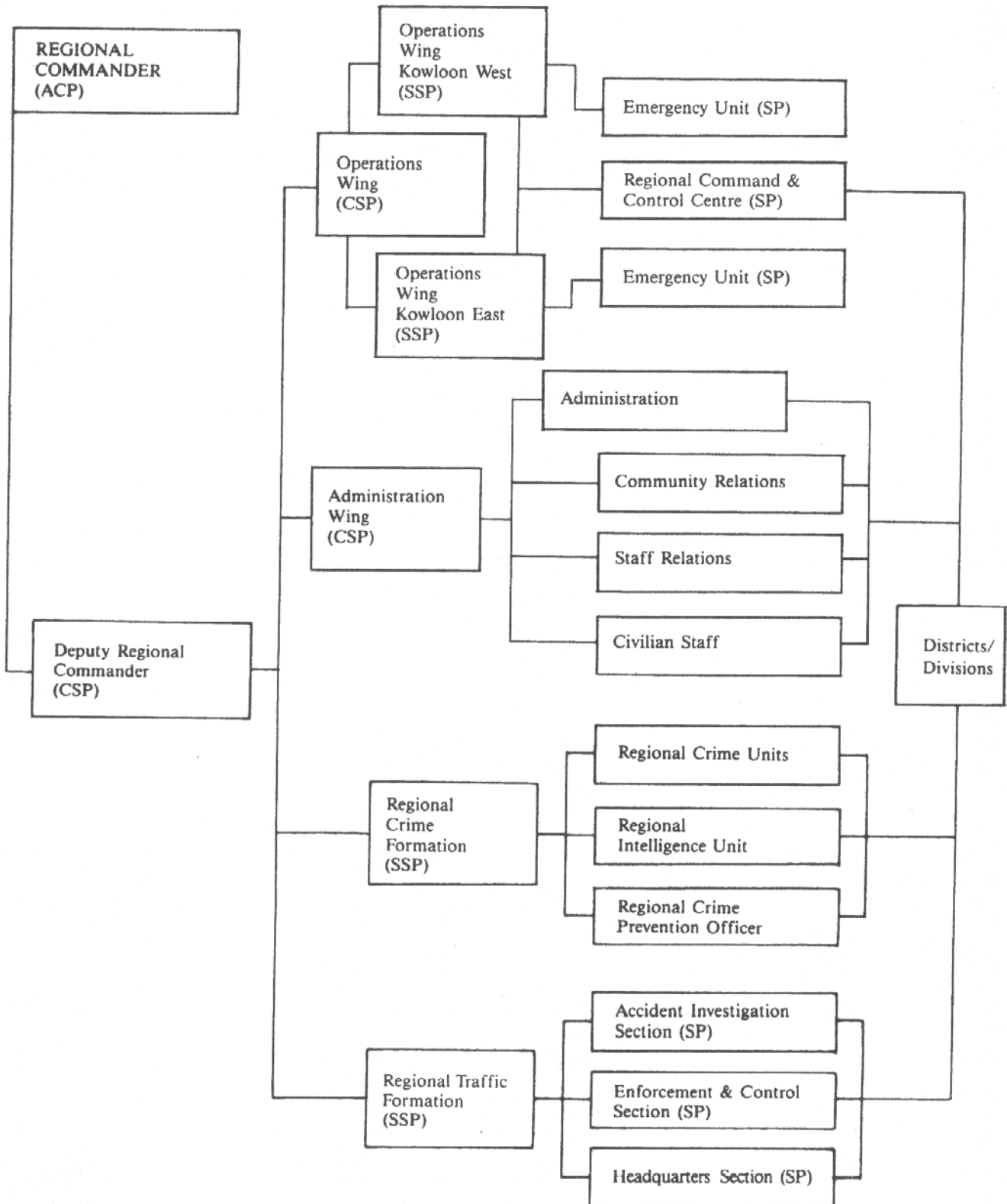
ORGANISATION OF "D" DEPARTMENT (MANAGEMENT AND INSPECTION SERVICES)



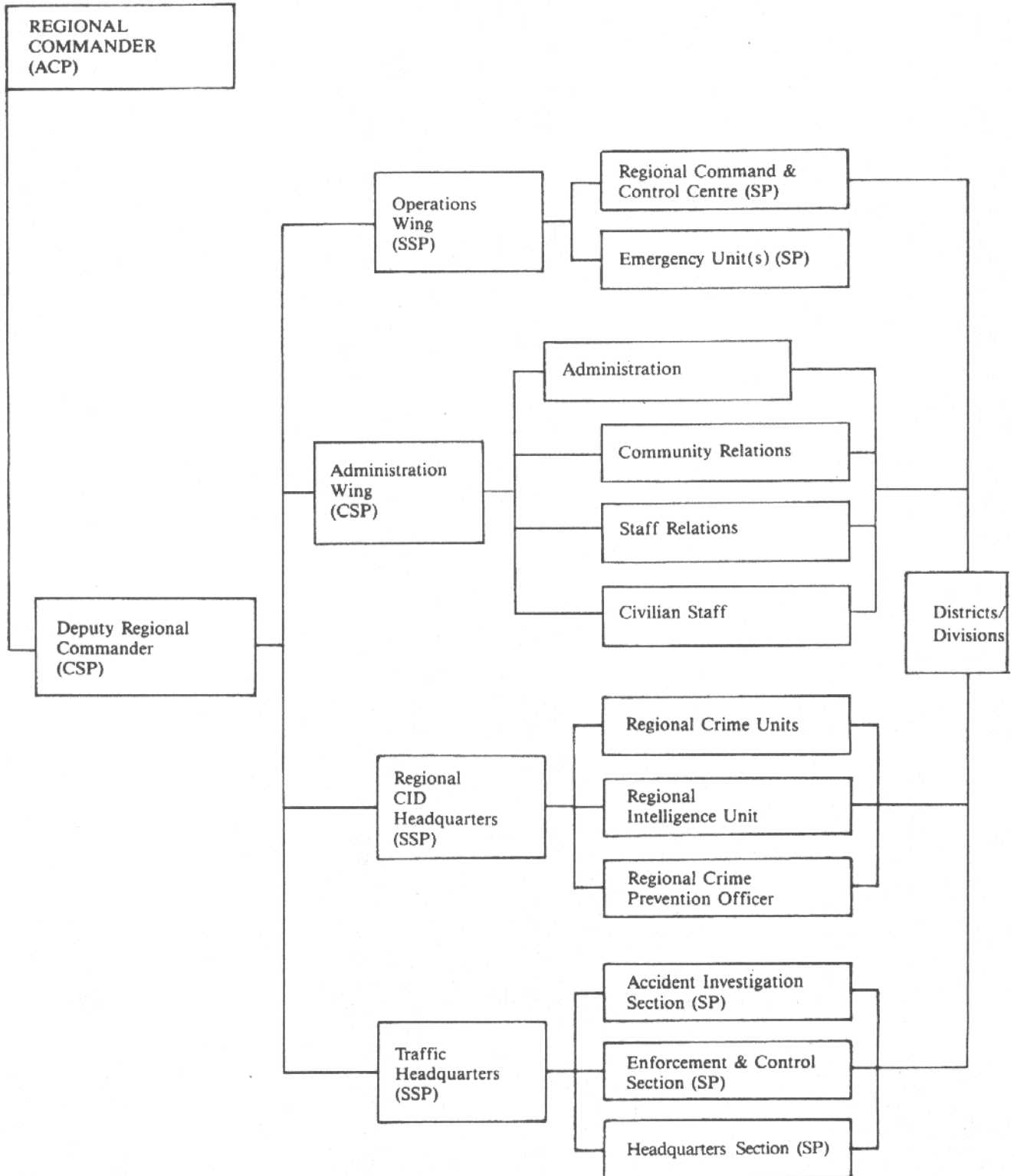
ORGANISATION OF "E" DEPARTMENT (CIVIL AND ADMINISTRATION) AND PLANNING AND DEVELOPMENT BRANCH



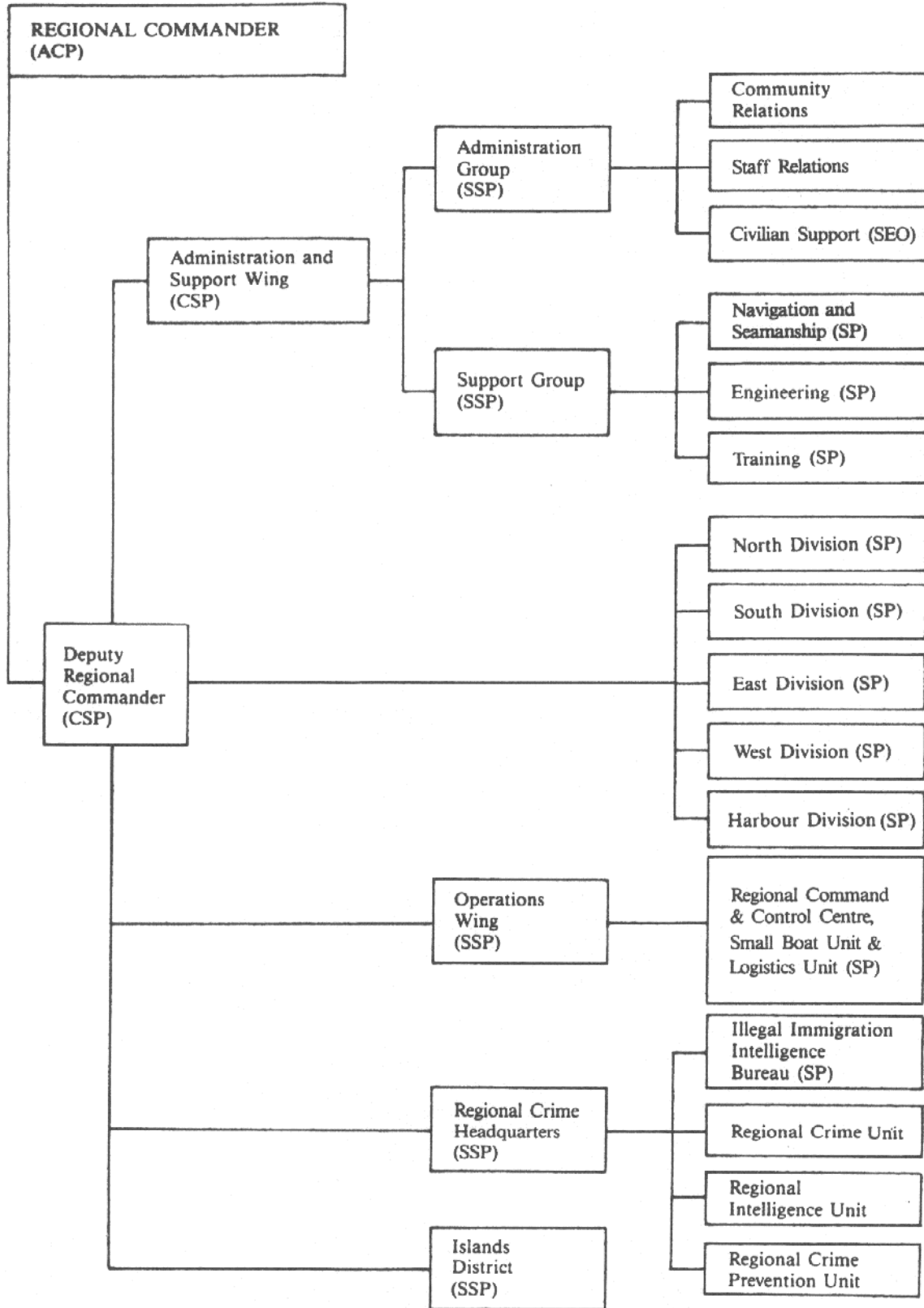
KOWLOON REGIONAL HEADQUARTERS



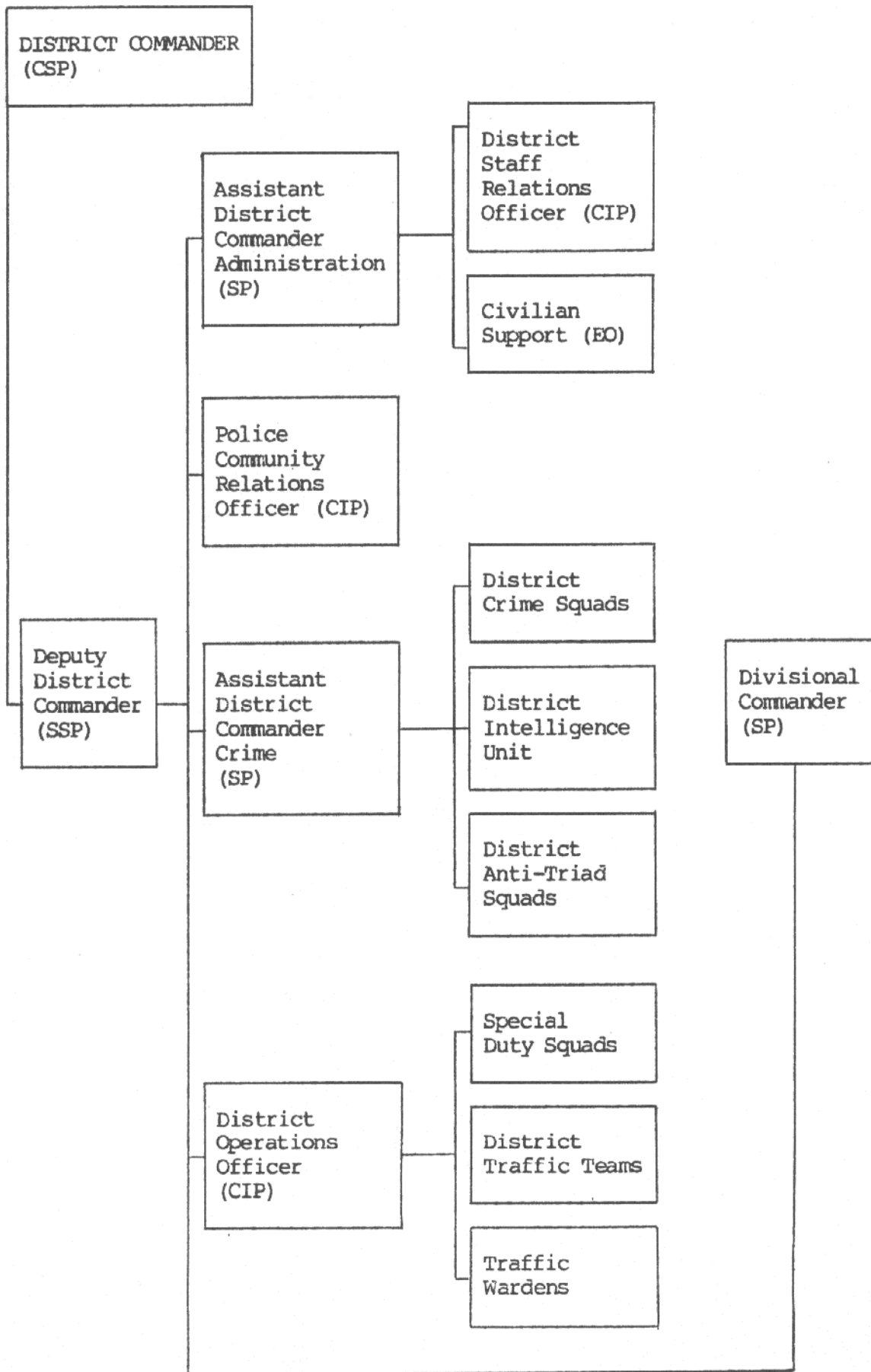
HONG KONG ISLAND & NEW TERRITORIES REGIONAL HEADQUARTERS



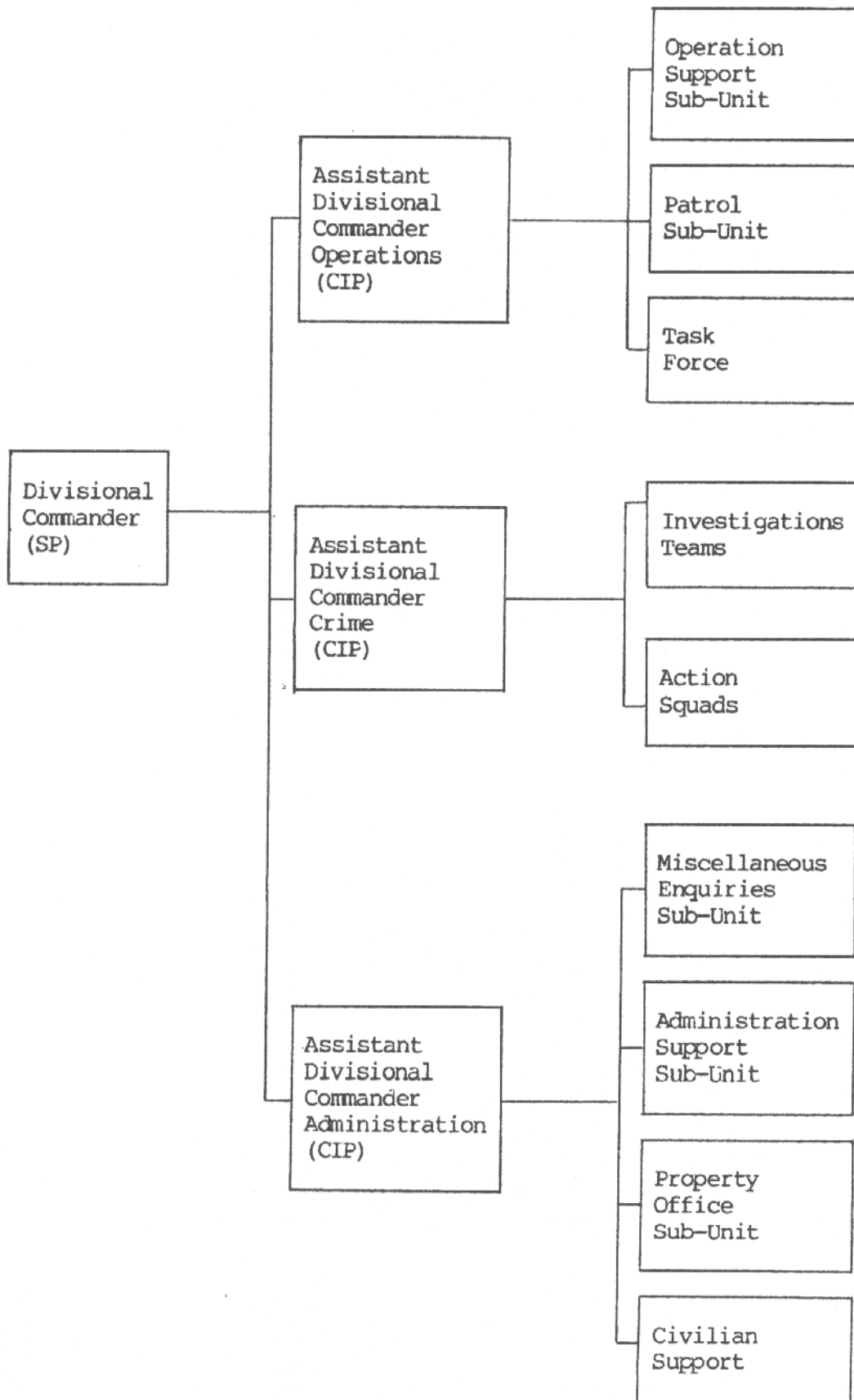
MARINE REGIONAL HEADQUARTERS



DISTRICT ORGANISATION CHART



DIVISIONAL ORGANISATION CHART



Annex 2.1 - Appendix V

STRENGTH OF MAJOR FORMATIONS - POLICE
(as at 1.6.88)

<u>Formations</u>	<u>Disciplined Staff</u>	<u>Civilian Staff</u>	<u>Total</u>
Operations	1,983	357	2,340
Support Wing	190	115	305
Traffic Wing	112	189	301
Crime Wing	1,181	311	1,492
Personnel Wing	235	230	465
Force Training Wing	1,750	252	2,002
Management Services Wing	1,624	556	2,180
Inspection Services Wing	140	90	230
Civil & Administration	7	391	398
Planning & Development Branch	20	25	45
Hong Kong Island Region	3,554	680	4,234
Kowloon Region	7,303	1,289	8,592
New Territories Region	4,925	863	5,788
Marine Region	2,822	267	3,089
Reserve (Leave/Sick Leave etc.)	983	-	983
Force Total	<u>26,829</u> =====	<u>5,615</u> =====	<u>32,444</u> =====